



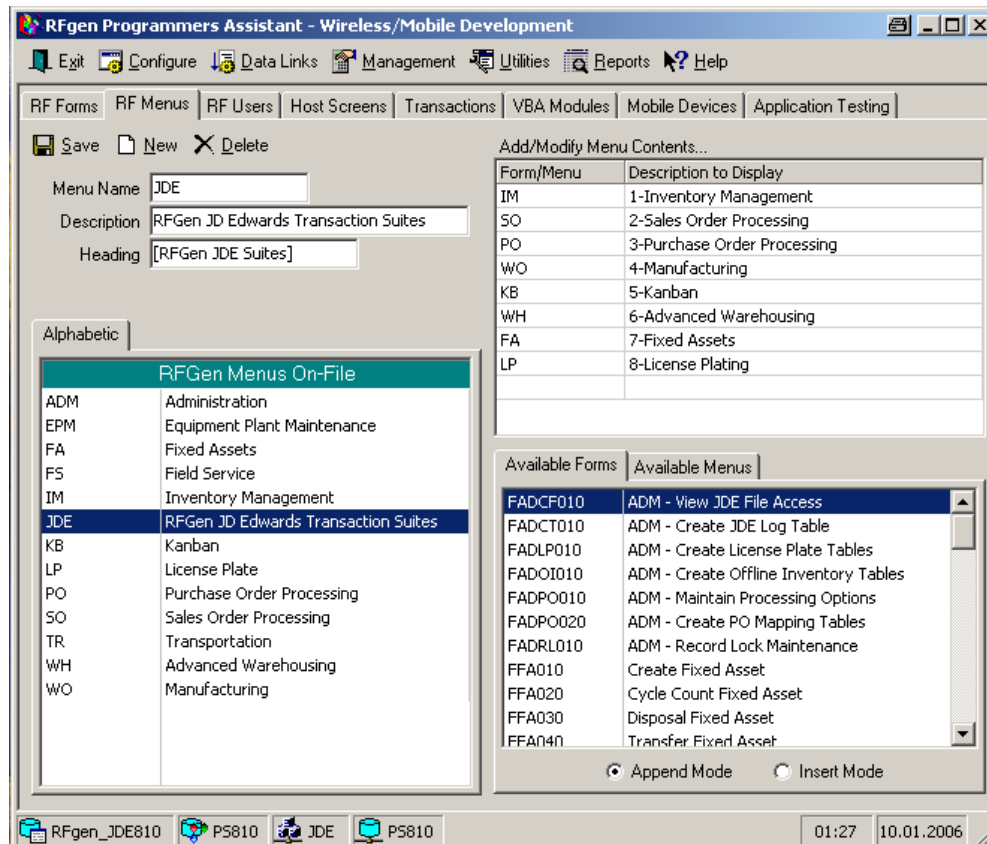
How to Setup Menus and Users

Index

- The RFAssistant Menus Tab3
- Creating a New Menu.....3
- Displaying and/or Deleting New Menus.....4
- RFgen Menus that pass the JDE Processing Option Version.....5
- The RFAssistant Users Tab.....7
- Creating a New User7
- User Properties7

The RFAssistant Menu Tab

Single-click on the RF Menu tab to display the RFAssistant window used to create menus. The RFAssistant menu item entry window will appear.



Creating a New Menu

Click on the New menu selection located on the left hand side of RFgen Programmers Assistant.

Enter a Menu Name and description for the menu.

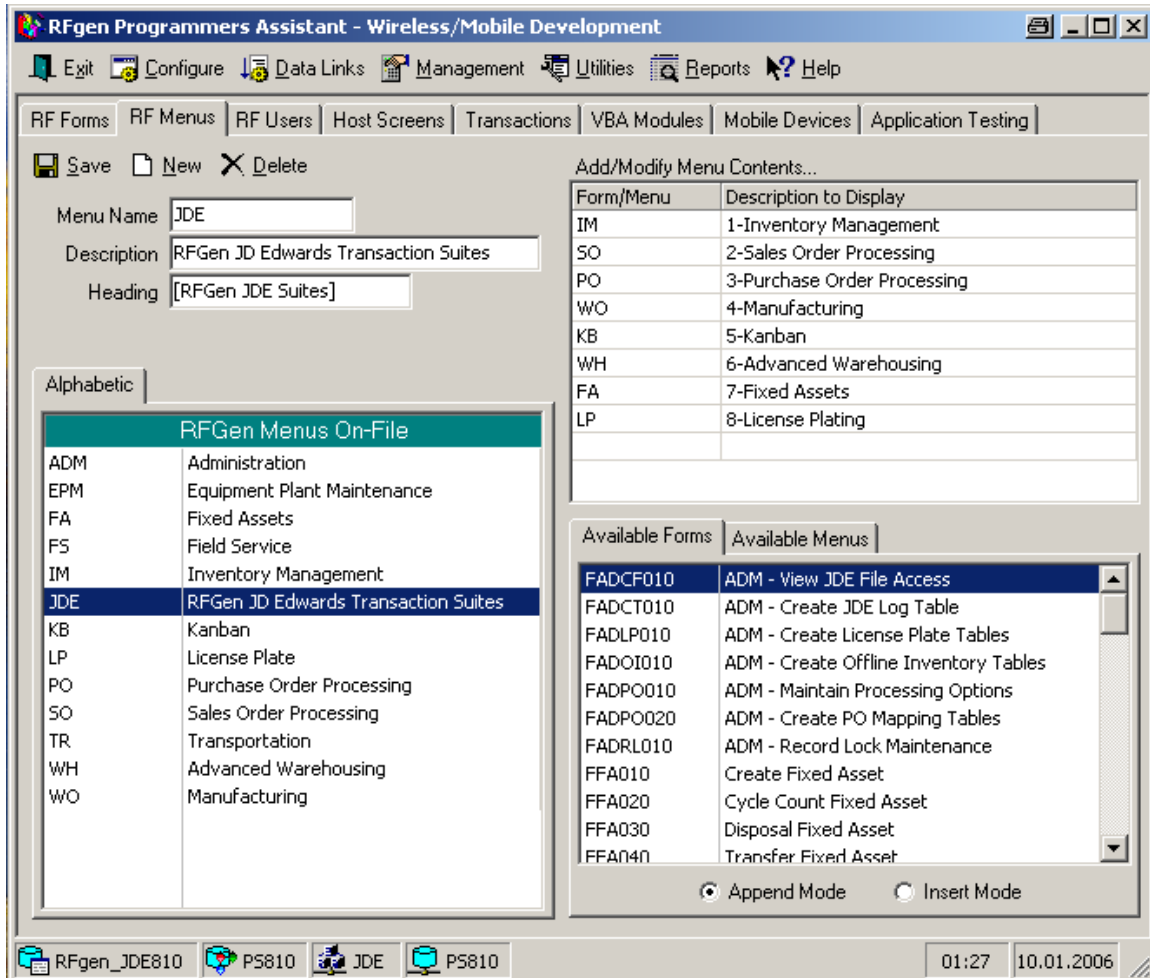
Double-click on the item listed in the box in the lower right of the window (i.e. available Forms/Menus).

Double-click again to select the next and subsequent item(s) for your menu. (As an alternative, click in the "Add/Modify Menu Contents" grid area and enter the name of an (existing) form or menu item).

Click on the Save menu item located on the left when you are finished with your selections.

Displaying and/or Deleting New Menus

To display an existing menu, double-click on the menu listed in the box in the lower left hand corner (Menus On-File).



To delete items on a menu, highlight the text with your mouse and press your keyboard 'Delete' key.

Pressing 'Delete' an additional time will delete the space reserved for the deleted menu selection.

RFgen Menus that pass the JDE Processing Option Version

Variables can be defined for Multiple Purpose forms. The variables can be referenced when the form is loaded to determine how to use the form. The variable name and values can be anything. There are no preset values.

The menu displayed has two of the same form but the “Description to Display” is altered to make them appear different.

Add/Modify Menu Contents...	
Form/Menu	Description to Display
-	-- Daily --
FIMII0100 -Vers=ZJDE0001	1-Issues
FIMIT0100 -Vers=ZJDE0001	2-Transfers
FIMIA0100 -Vers=ZJDE0001	3-Adjustments
FIMIR0100 -Vers=ZJDE0001	4-Reclassifications

Using the format FORMNAME -Vers=Version will create variables with values that can be referenced at runtime.

Multiple values can be combined, like Version and Sort Sequence.....

Add/Modify Menu Contents...	
Form/Menu	Description to Display
FSOSC0100 -Vers=ZJDE0001 -OrderBy=sdlocn, sdlitm	4- Pick Confirm
FSOSC0100 -Vers=ZJDE0001 -OrderBy=sdlnid	5- Ship Confirm

or Status Range from / to.

Add/Modify Menu Contents...	
Form/Menu	Description to Display
FSOSC0100 -Vers=ZJDE0001 -OrderBy=sdlocn, sdlitm	4- Pick Confirm
FSOSC0100 -Vers=ZJDE0001 -OrderBy=sdlnid	5- Ship Confirm
-	-- Inquiries --
FSOQ00100 -StsFr=520 -StsTo=580	6- Open SO's by Item
FSOQI0100 -StsFr=520 -StsTo=580	7- SO Status by Item
FSOQL0100 -StsFr=520 -StsTo=580	8- SO Status by Line
-	

In the Form_Load event, use the command RFGGetValue(“Vers”) to extract the value from the variable “vers”. Based on the result, show or hide prompts or change the logic of the transaction.

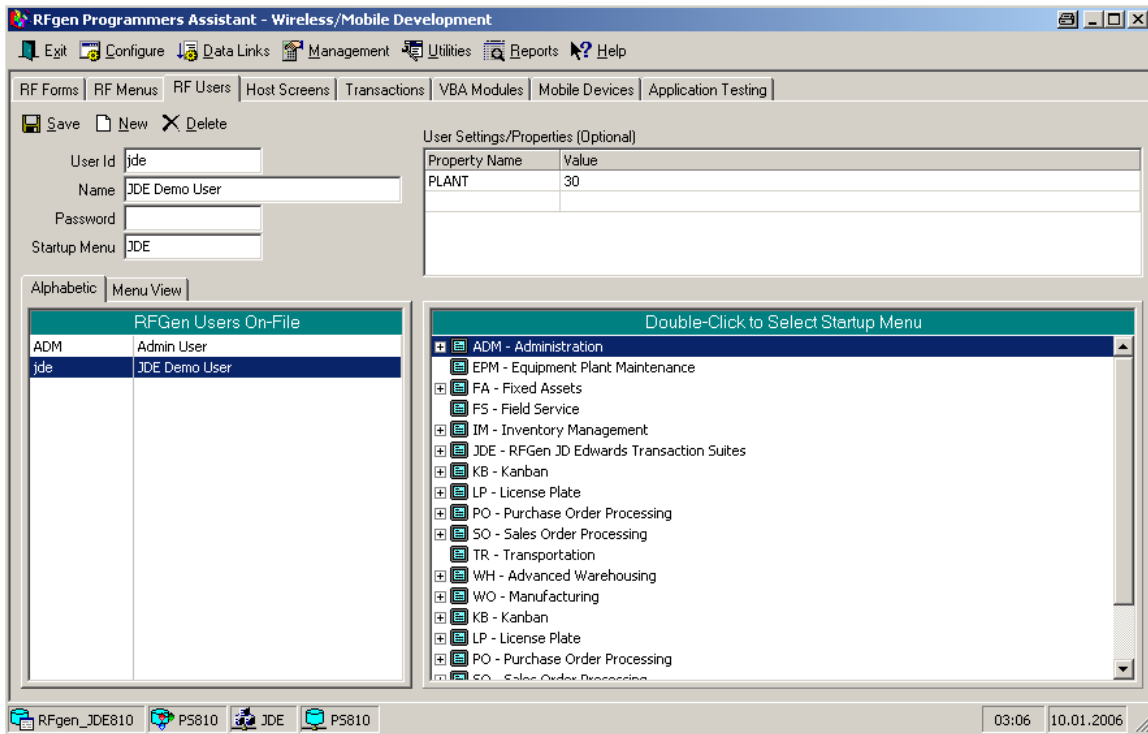
Making the form name a dash supports comment lines within a menu.

Add/Modify Menu Contents...	
Form/Menu	Description to Display
FSOSC0100 -Vers=ZJDE0001 -OrderBy=sdlocn, sdlitm	4- Pick Confirm
FSOSC0100 -Vers=ZJDE0001 -OrderBy=sdlnid	5- Ship Confirm
-	-- Inquiries --
FSOQO0100 -StsFr=520 -StsTo=580	6- Open SO's by Item
FSOQI0100 -StsFr=520 -StsTo=580	7- SO Status by Item
FSOQL0100 -StsFr=520 -StsTo=580	8- SO Status by Line
-	
-	-- Other --
FSOSU0100 -Vers=ZJDE0001	9- Speed Status Update

In this case what is displayed on the menu is a comment line and the user has no ability to select it from the menu. The highlight bar will skip over this entry.

The RFAssistant Users Tab

Single-click the RF Users tab to display the RFAssistant window used to create RF device user IDs.



Here a user code of 'JDE' is illustrated. No password is specified/required for user JDE. JDE's startup menu is 'JDE'.

Creating a New User

Click on the New menu selection

Enter a code, a name, and a password (optional).

Select a startup menu name to use.

Enter the menu name. (Either enter it manually or double-click on a menu item listed in the right hand side display).

Click the Save menu item when finished.

To display an existing RFgen user, double click on a user code listed in the box in the lower left right (Users On-File). User IDs provide both security and organization to your RFgen system.

User Properties

The User Settings/Properties grid is used for assigning a constant variable and a custom value that is user specific. In this case "PLANT" is the variable name and has been assigned "30" as a value. Other examples may include "Language" = "English"

or "SecurityLevel" = "25". Using the RFGetUserInfo("SecurityLevel") command will return "25" when user JDE is logged in.

User Settings/Properties (Optional)	
Property Name	Value
PLANT	30

