



How to Setup Tables for JD Edwards Processing Options

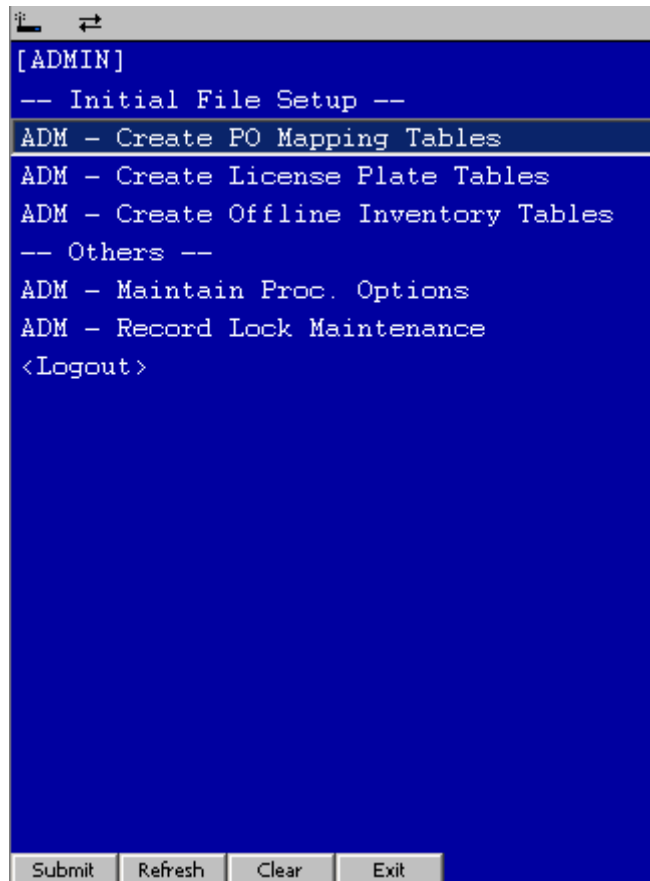
© The DataMAX Software Group Inc
5049 Robert J Mathews Parkway, Suite 100
El Dorado Hills, CA 95762
(916) 939-4065

Index

Run the Admin Tools	3
Select "Create PO Mapping Tables"	4

Run the Admin Tools

When you sign on to RFgen with “adm” the Admin menu shows up.



Select "Create PO Mapping Tables"

The screen indicates the files do not exist yet.

Type in the Data Source.

All data sources are visible on the left lower corner on the Programmers Assistant.



The first 2 data sources are:

- RFgen database
- RFgen Transaction Management

All following data sources are Non RFgen.

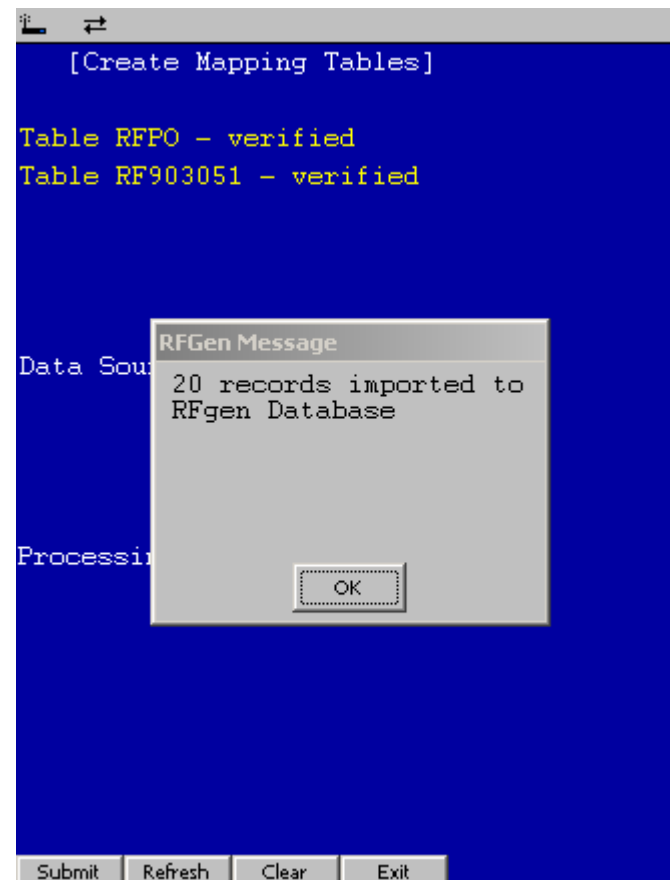
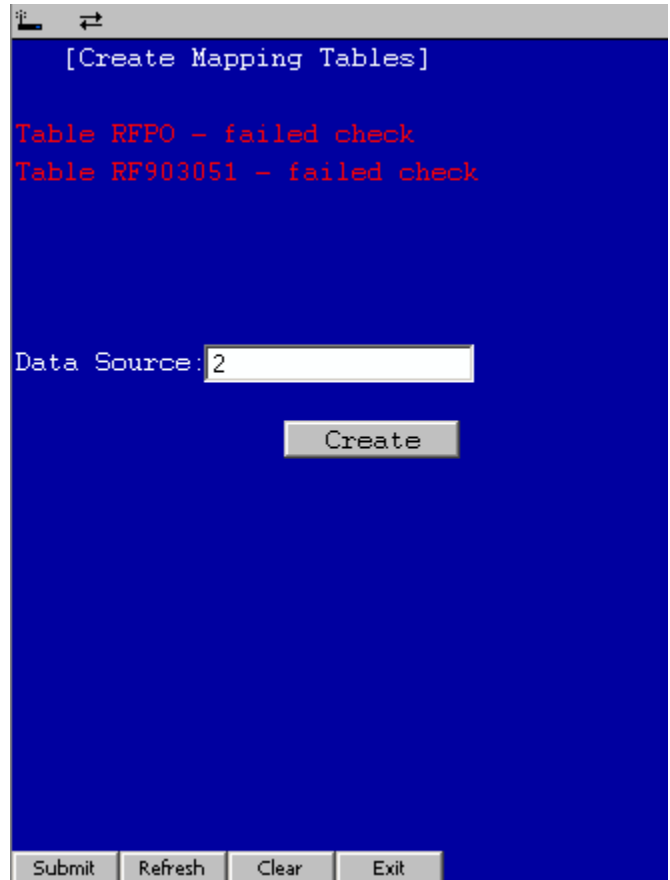
In this example it is:

- JDE ERP Connection
- JDE Database

The number for the data source is the number of the position of the non-RFgen data source. In this example it is number 2. If you press enter it defaults to the data source name.

Click to create the required files.

The screen indicates the files are created successfully and 20 records from the RFgen database are copied into the files.



The files will be created in the default database assigned in the ODBC Setup.

