



How to Setup RFgen Transaction Logging

© The DataMAX Software Group Inc
5049 Robert J Mathews Parkway, Suite 100
El Dorado Hills, CA 95762
(916) 939-4065

Index

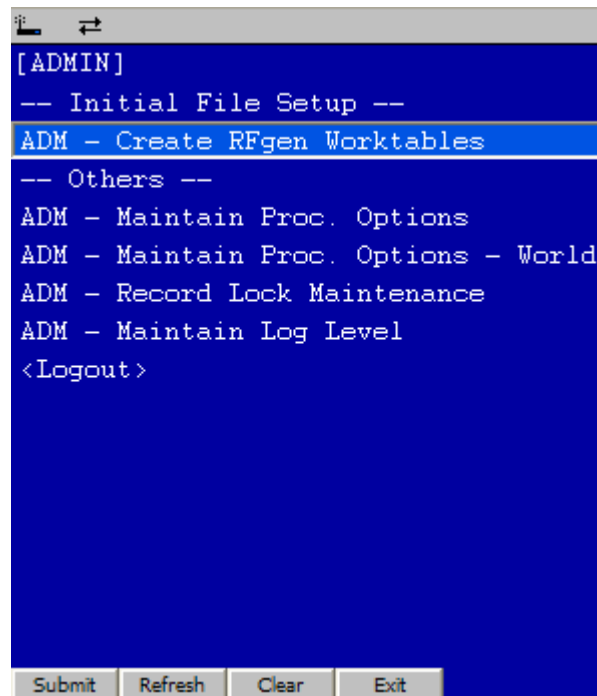
Assumptions:	3
Run the Admin Tools	4
Select “Maintain Log Level”	5
Scheduling Email Notification	7
Sample Log Notification Email	8
Reading the RFgen Transaction Log	9
Transaction Manager (RFQueue) Failures	10

Assumptions:

This document assumes that the RFgen worktables have already been created. One of the worktables that is required is the RFLOG table. If you have not already created this table, you must first launch the Create Worktables application and create the RFgen Log File.

Run the Admin Tools

When you sign on to RFgen with “adm” the Admin menu shows up.



Select “Maintain Log Level”

The Maintain RFgen Logging Level screen appears. This screen is used to specify the behavior of the transaction logging.

The top third of the screen shows the logging options for each type of transaction. For each one, checking the first check box indicates that you want to log all successful transactions. Checking the second check box indicates that you want to log errors only. If you check both, successful and unsuccessful transactions will be logged.

Logging TM macro calls will log calls to the transaction macros. This is where most of the JDE business functions are called.

Logging BSFN calls will log calls to the JDE business functions.

Logging SQL statements will log each SQL statement that is run against the database during the execution of an RFgen form and transaction macro.

Force Scanning will force scanning at those RFgen prompts where scanning, rather than manual entry, is required.

If you wish to have an email notification sent to the person responsible for RFgen administration, complete the “mail to” prompt with a valid email address. Multiple email addresses can be entered as long as they are separated with a semi-colon “;”. If you want to carbon copy someone on the email notification, enter a valid email address in the “CC” prompt. Multiple email addresses can also be specified here.

If you are configuring email notification, you must choose the type of email your company is capable of sending. When positioned on the “Email Type” prompt, either press F1 or click the search icon to see a list of supported email types.

If you choose “SQL Server” for your email type, your database administrator must first configure the SQL server properly in order to send emails. Additionally, you must install a stored procedure on your SQL server to send the email. This stored procedure can be obtained from DataMAX.

If you choose “JDE Mail” for your email type, a standard business function is used to send the email. There may be some configuration required of your enterprise server and/or email rules if you choose this option.

Maintain RFgen Logging Level

Log TM Macros Call Error

Log BSFN Calls Error

Log SQL Statements Error

Force Scanning

mail to

CC

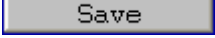
Email Type 3

Server Name (smtp only)

Save

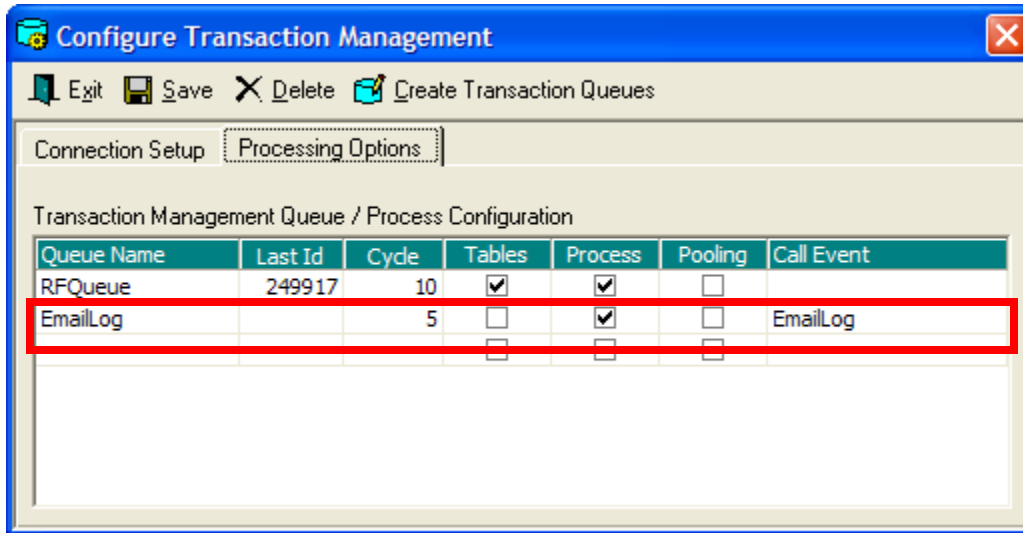
Submit Refresh Clear Exit

The final and easiest choice for email is the “SMTP” option. This option uses standard Microsoft Windows DLL’s to send the email notification. It is the easiest and requires the least configuration effort in order to send emails from your RFgen server. If you choose SMTP, you must specify a valid SMTP server name in the “Server Name (smtp only)” prompt.

Once you are finished with the above configuration settings, click the  button to save your work. Proceed with the Scheduling Email notification section of this document.

Scheduling Email Notification

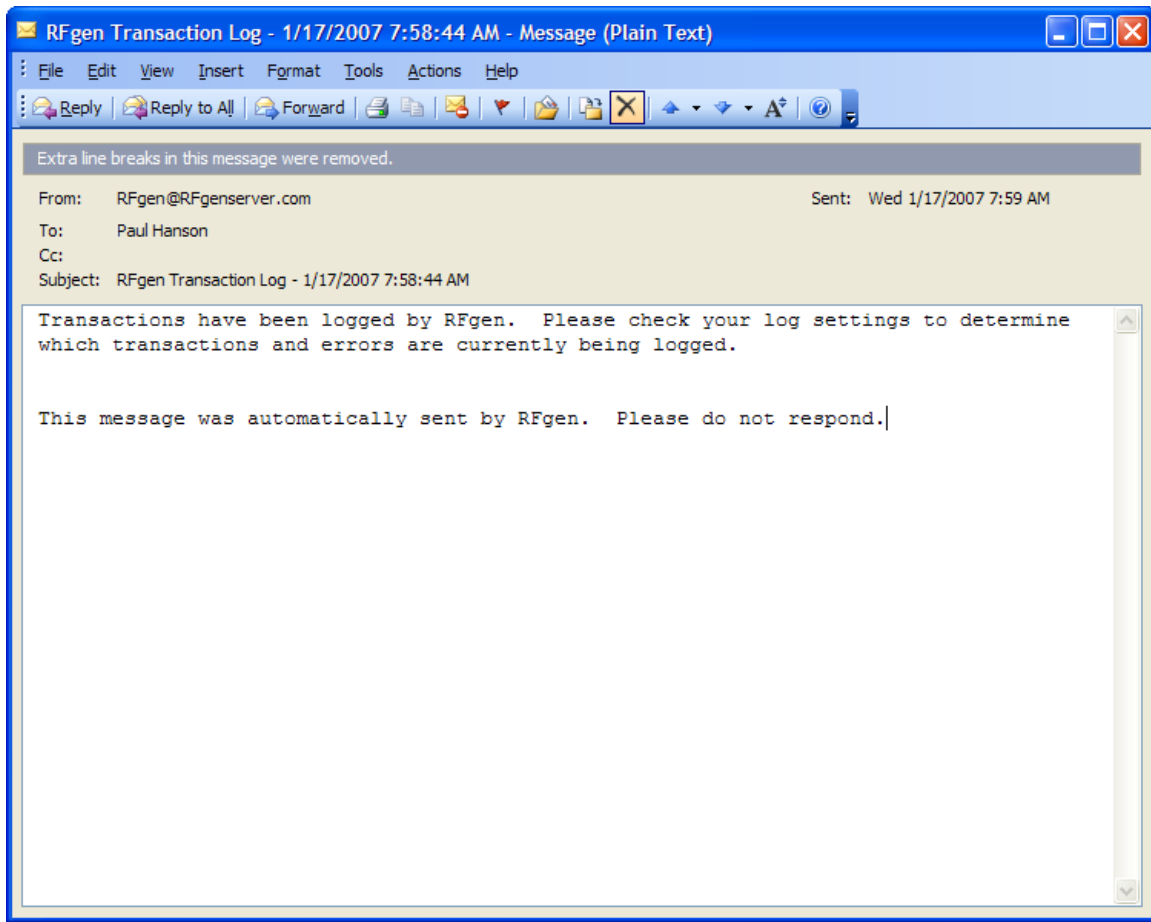
In order to use email notification, you must make sure the Transaction Manager is configured and running. If your Transaction Manager does not look similar to the following, enter the highlighted information and Save the Transaction Manager configuration. Set the Cycle value to whatever interval you would like to receive the email notification. When finished, click the Save button.



After you have completed all of the email configuration settings shown above, the RFgen transactions should begin sending email notification immediately depending upon the settings you have defined.

Sample Log Notification Email

The following is a sample of the email notification you will receive from the RFgen server given that the configuration is completed correctly.



Reading the RFgen Transaction Log

The RFgen transactions are logged in the RFLOG table in your JDE database. Each log entry consists of the following components:

- Transaction ID that is writing the log entry (form name, transaction macro name).
- Severity
- Transaction being called (macro, business function, SQL statement).
- Log Data (specific information about the data being passed to a macro or business function, or the SQL statement that is being called).
- Job Name (IP address of the client generating the log entry).
- RF User (user ID of the RFgen user generating the log entry).
- Date (the date and time the log entry was created).
- Unique ID (this is a unique log entry identifier).

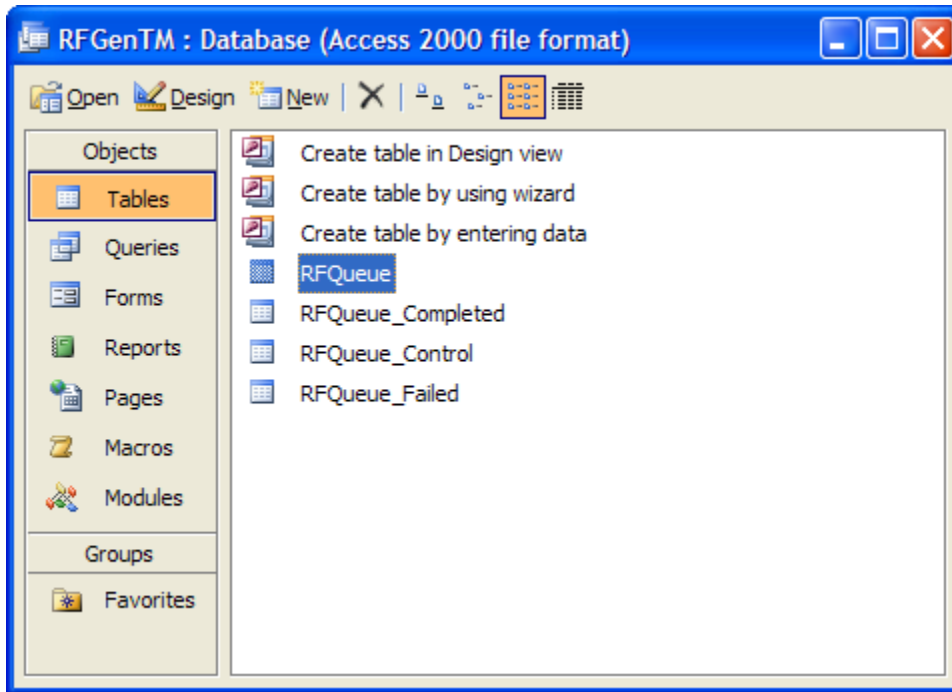
A typical transaction log looks like the following:

	RFTRID	RFERR	RFDL01	RFDATA	RFJOBN	RFUSER	RFDATE	RFUKID
1	FIMIA0100	1	TIMIA0100	tmCO:00001 tmMCU: 30 tmDCTO:IA tmLITM:21...	127.0.0.1	DEMO	20070116162500	1.0
2	TIMIA0100		F4102	select IBITM, IBAITM from PSData810.dbo.F4102 wh...	127.0.0.1	DEMO	20070116162500	2.0
3	TIMIA0100		F4101	select IMUOM2 from PSData810.dbo.F4101 where IMLI...	127.0.0.1	DEMO	20070116162500	3.0
4	TIMIA0100	3	GetLocalComputerId	MachineKey:	127.0.0.1	DEMO	20070116162500	4.0
5	TIMIA0100	3	F4114BeginDocument	DocumentAction: ComputerID:PHLAPTOP ErrorConditio...	127.0.0.1	DEMO	20070116162500	5.0
6	TIMIA0100	3	F4114EditLine	LineAction: ComputerID:PHLAPTOP ErrorConditions: ...	127.0.0.1	DEMO	20070116162502	6.0
7	TIMIA0100	3	RetrieveCompanyCurrencyCode	Company:00001 CurrencyCode: DetailedCurrencyResta...	127.0.0.1	DEMO	20070116162511	7.0
8	TIMIA0100	3	F0911FSGetNextDocNumber	JobNumber:2 ErrorFlag: NextNumberIndex:3 NextNumb...	127.0.0.1	DEMO	20070116162511	8.0
9	TIMIA0100	3	F0911FSBeginDoc	JobNumber:2 DocAction:1 EditInstructionFlag:1 Err...	127.0.0.1	DEMO	20070116162511	9.0
10	TIMIA0100	3	F4114EndDocument	ProgramID:EP4114 DocumentNumber:151 ComputerID:PH...	127.0.0.1	DEMO	20070116162511	10.0
11	TIMIA0100	3	F4114ClearDetailStack	ComputerID:PHLAPTOP FromLineNumber: ThruLineNumbe...	127.0.0.1	DEMO	20070116162524	11.0

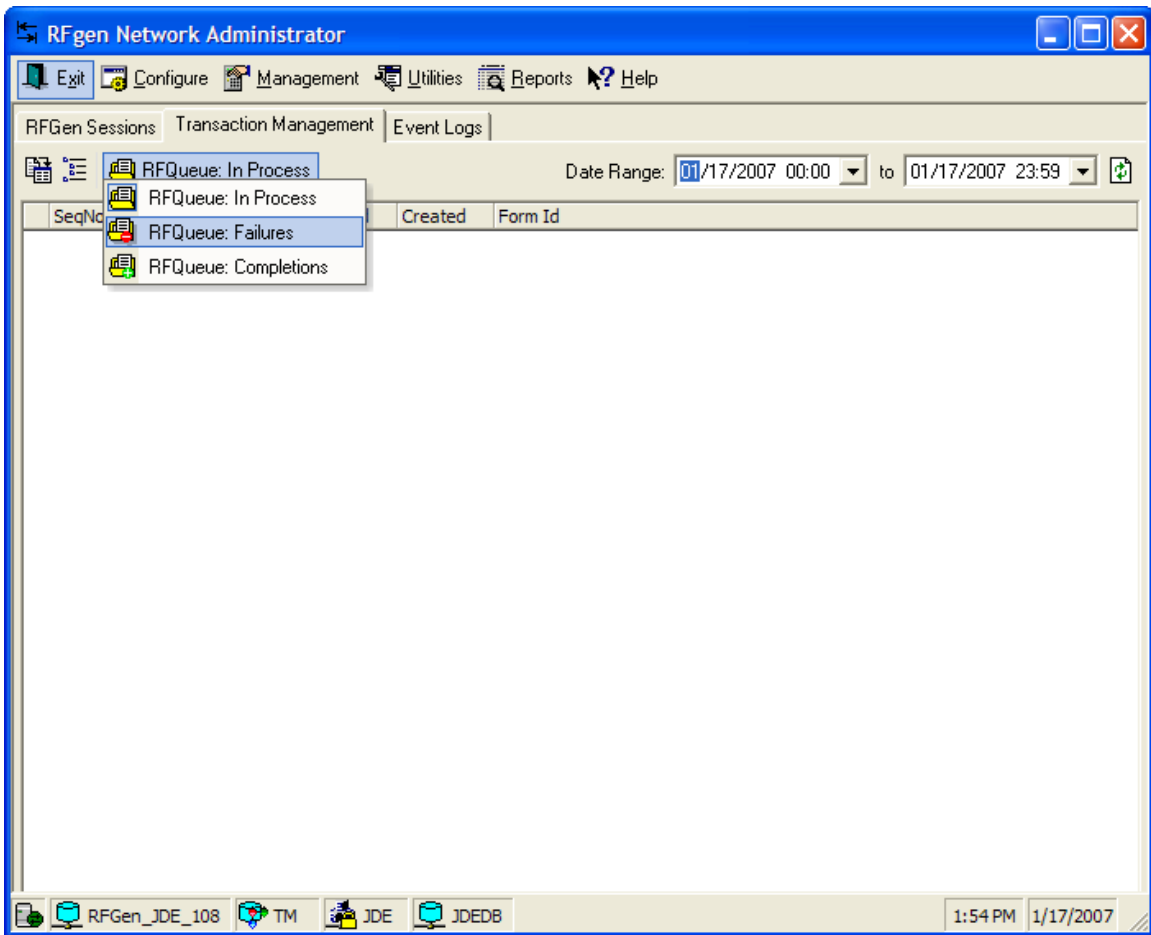
Since the RFLOG is a table in your JDE database, it can be used as a basis to run your own queries or write your own reports using a reporting tool of choice.

Transaction Manager (RFQueue) Failures

If you are using the RFgen Transaction Manager for transaction queuing or are using it for offline inventory (high availability) and a transaction fails, the failed transaction is stored in the RFQueue_Failed table inside the RFGenTM database. This database is located in the c:\program files\RFGen folder on the RFgen server.



In order to view the failed transactions, launch the RFgen Network Administrator and click on the Transaction Management tab. Then, click on the RFQueue In Process button to change the view to failed transactions.



The transactions that have failed between the dates shown in the Date Range will be listed. Details about the transaction will also be shown. Failed transactions can be re-processed by right clicking on the transaction and selecting "Repost Transaction". This will move the transaction from the RFQueue_Failed table to the RFQueue table in the RFGenTM database. It will then be reprocessed at the next processing interval as specified in the Transaction Manager configuration.

