



How to Setup ODBC and the JD Edwards Connector

© The DataMAX Software Group Inc
5049 Robert J Mathews Parkway, Suite 100
El Dorado Hills, CA 95762
(916) 939-4065

Index

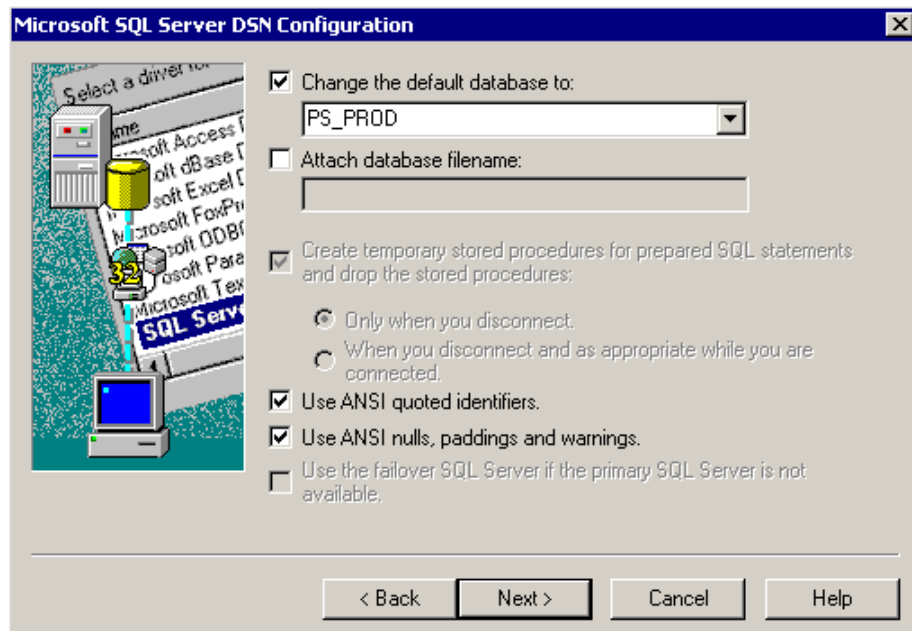
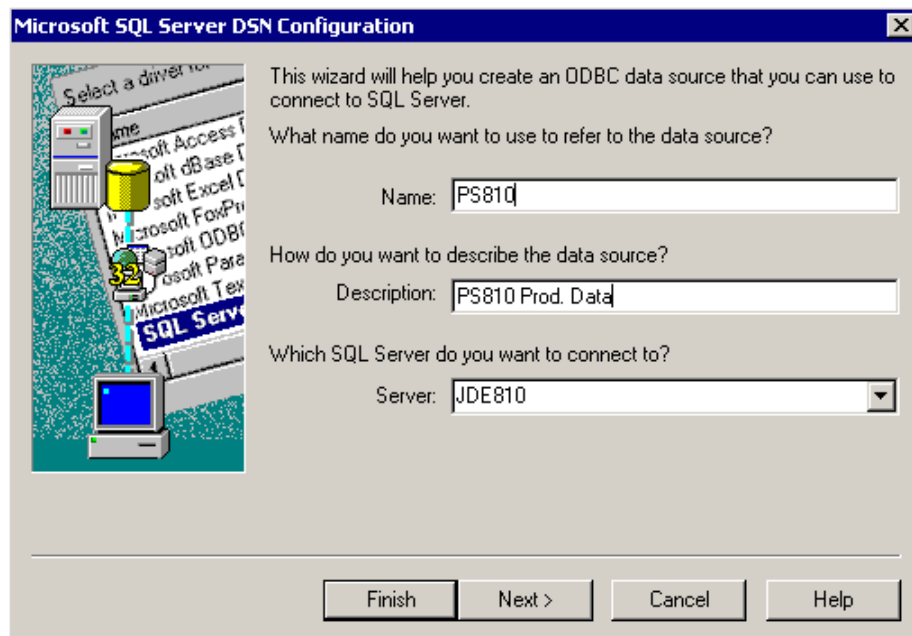
| | |
|--|---|
| Building the ODBC Connection | 3 |
| Configuring an ERP Connection to JDEdwards | 4 |
| Connection Setup | 4 |
| Connection Pooling | 6 |
| Startup Mode | 6 |

Building the ODBC Connection

To enable RFgen to read data for validation, RFgen requires a data source pointing to the JDEdwards EnterpriseOne database server *and* pointing to the database that identifies the environment.

Example:

This example shows the ODBC data source name as PS810 and the database name as PS_PROD.



Configuring an ERP Connection to JDEdwards

Connection Setup

To configure an ERP connection:

Select **Configure**

Select **Add New ERP System Connection**

The following configuration window will appear.

The screenshot shows a Windows-style dialog box titled "Configure ERP System Connection (1) (Settings Changed)". It has a menu bar with "Exit", "Save", and "Delete". The dialog is divided into three tabs: "Connection Setup", "Connection Pooling", and "Schedule DownTime". The "Connection Setup" tab is selected. It contains the following fields:

- Name/Id: JDE
- Data Source: P5810
- ERP Type: JD Edwards
- System Database: P55Y810
- Environment: DEMO810
- Table Owner: dbo
- Version: 8.10
- Language: EN
- User: DEMO
- Password: (empty)

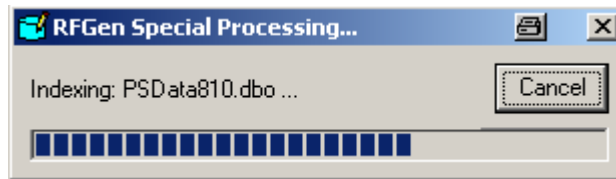
A J.D. Edwards logo is located in the bottom right corner of the dialog.

Enter in the following values:

- | | |
|--------------------|---|
| Name/Id | In the example above we have selected the Name/ID of JDE. |
| ERP Type | The ERP Type is a selection available in a drop down box based on your available options. We have selected JD Edwards. |
| Environment | The value in this field is the default value listed in your JDE.ini file. |
| Version | The Version is a selection available in a drop down box based on your available versions. We are using JD Edwards version 8.10 in this example. |
| Language | Enter in the two-letter language code. If in doubt, contact your ERP Administrator. |

- User/Password** This field serves as a default for all connections, unless additional users and passwords need to be identified. Please refer to “Connection Pooling” at the end of this document for more information.
- Data Source** The Data Source is a selection available in a drop down box based on your available Data Sources.
- System Database** This value is the default listed in the JDE.ini file that is located on your system.
- Table Owner** This value is the default listed in the JDE.ini file that is located on your system.

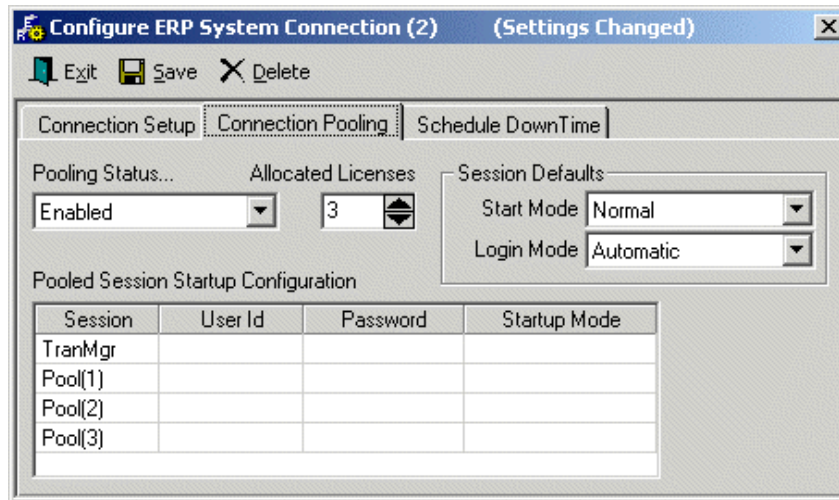
The data listed in the fields as outlined above are used to generate a specific list of tables within JDE EnterpriseOne and RFgen auto-indexes them. A message box, as shown below, will appear showing the progress of the indexing feature.



Connection Pooling

Connection Pooling enables RFgen (Enterprise edition only) to pool multiple remote devices to a single ERP license.

Select the Connection Pooling tab. A Pooling session appears for each allocated license, as they are incremented.



Enter a User, Password and Startup Mode for each in the corresponding boxes (if required). Double-click the box to change or delete entries.

A Transaction Manager session, as shown above, may also be used to allow the Transaction Manager to log in to the system to execute macros.

User and Password defaults are provided by the entries made in the Connection Setup tab.

Note: Session Defaults may be also be set for Start Mode and Login Mode

Startup Mode

Normal mode indicates that the sessions will startup only when necessary.

Immediate mode will start the session the moment a mobile device is connected to RFgen.

Delayed mode will start the session after a request is made to interact with the host. The user can log into RFgen, open a form that performs data collection, fill in the information required by the form, then, after pressing enter, a host session will begin.

Login Mode

Automatic means that the defaults will be used and when the session is started. The default user and password will be used as the log in.

Manual means that the session will be started and the script must pass the user and password information to the host.

The connection-pooling User ID and Password fields are for allowing separate pooled handles to the ERP system to be logged in using different settings. As each session is taken from the pool (when simultaneous access is required) the next pool's settings will be used. For example, if an ERP system only allowed two connections with a particular User ID, Pool (3)'s User ID and Password could be specified and the first two will be taken from the default information.

The Scheduled Down Time tab is identical to the database connection. Save the settings when all the fields are filled in and RFgen will make the connection.